

# Hilton-Parma Parks & Recreation

Help us build our brand NEW  
Playground!!!

## Playground Donation Opportunities

The south playground at Parma Town Park has served the community well, but is aging and wearing quickly to a point where it presents some serious safety concerns. Playgrounds, like any structure, have a life expectancy. Over the past several years, we have put Band-Aids and boarded up areas only for users to remove and expose said areas, putting themselves, and the Town at risk. Already one of the most frequently used amenities in the park, playgrounds became an invaluable place of respite given our current circumstances. In order to ensure safety of users, as well as enhance quality of life, we have come to the determination that removal and replacement of this structure is a necessary priority. With your support, our goal is to build a unique, state of the art, 7,400 square foot playground in its place. The total budget for the project is \$220,000. The Friends of Hilton-Parma Parks and Recreation are seeking assistance from you, our patrons, to complete the playground and make this community dream a reality. As a donor, we will work with you to fully maximize community goodwill. Every piece of promotional material, interview and event is a new opportunity for us to show our gratitude to those who are committed to the betterment of our community. Learn more about our donor levels and opportunities below!

### PLAYGROUND CHAMPION

\$250 +

### CLIMBING MASTER

\$100 - \$249

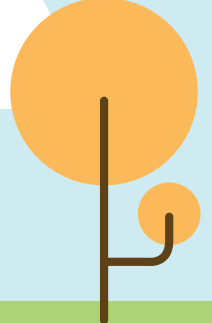
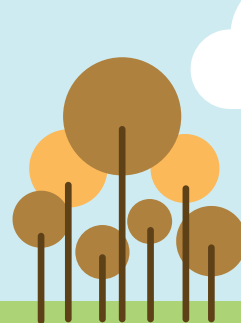
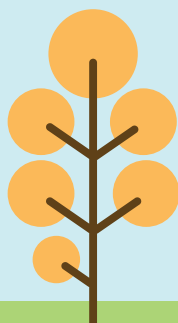
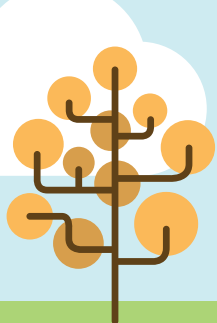
### FUN ADVOCATE

\$50 - \$99

### HAPPINESS BOOSTER

\$10 - \$49

All donors will be invited to a Virtual Donor Party (with prizes!), and listed on 2021 promotional materials and a temporary sign located at the playground!



Town of Parma - Parks & Recreation  
[www.facebook.com/hprecreation](https://www.facebook.com/hprecreation)  
[www.hprecreation.org](https://www.hprecreation.org)  
Contact: [tvenniro@parmany.org](mailto:tvenniro@parmany.org)

